

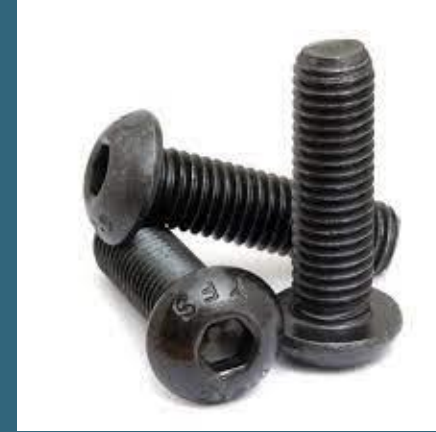
# RESPAWN BLOCK



# WHAT YOU NEED:

10-32 HEX NUTS AND NYLON HEX NUTS

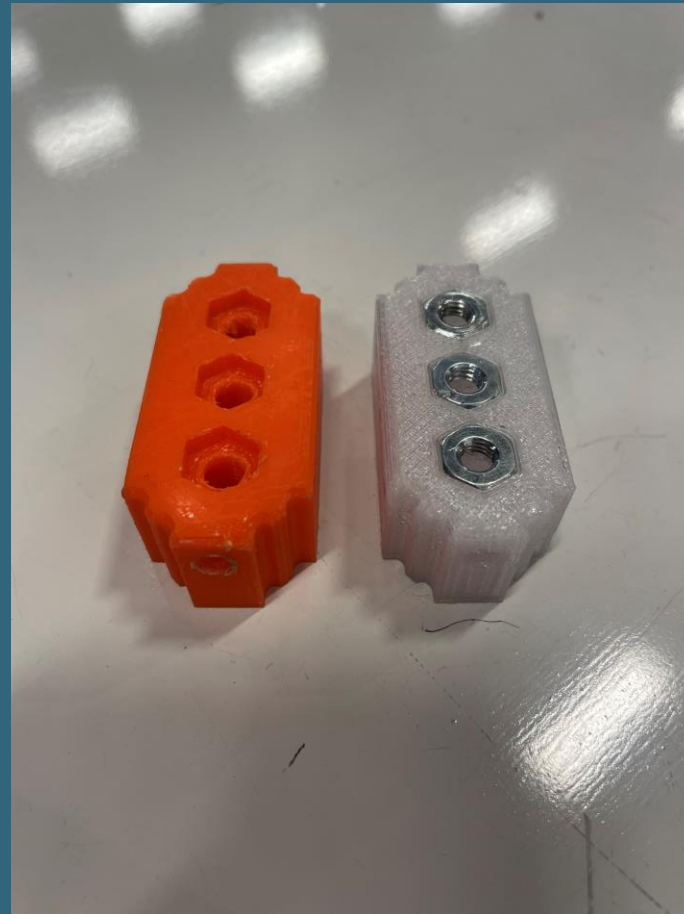
10-32 SCREW 1'' & 1/4''      1/8'' T-HANDLE OR ALAN WRENCH



# STEP 1:

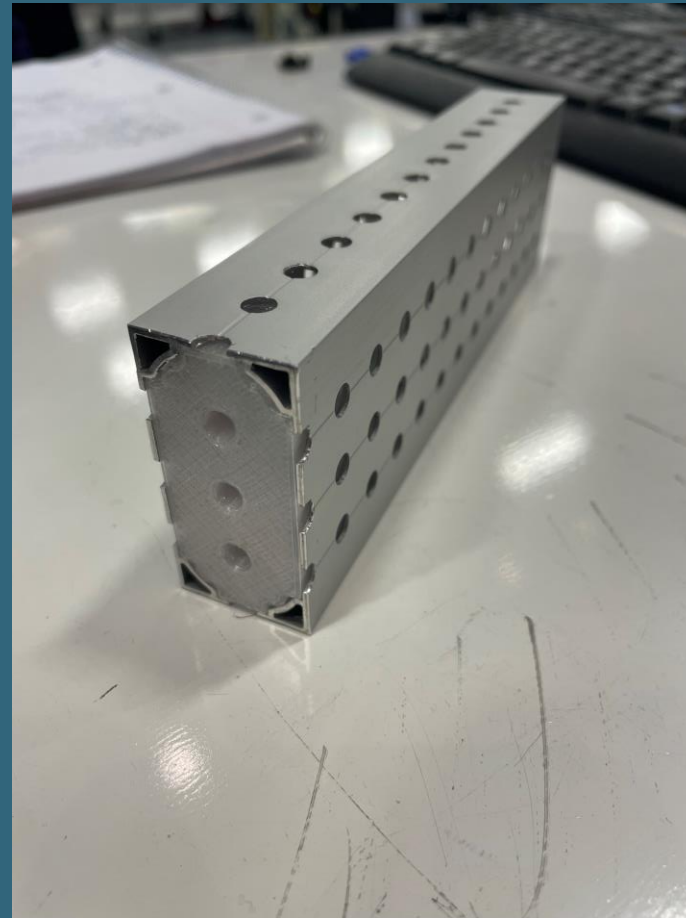
HAVING 2 SCREWS IS ENOUGH, HOWEVER, 3 JUST MAKES IT EXTRA ROBUST.

PUT THE HEX NUTS INTO THE SLOTS. THEY ARE MEANT TO BE SNUG.



# STEP 2:

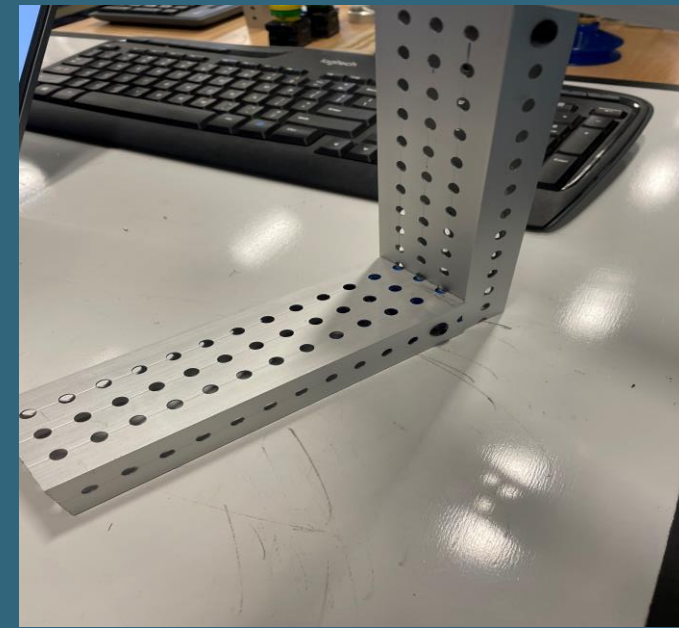
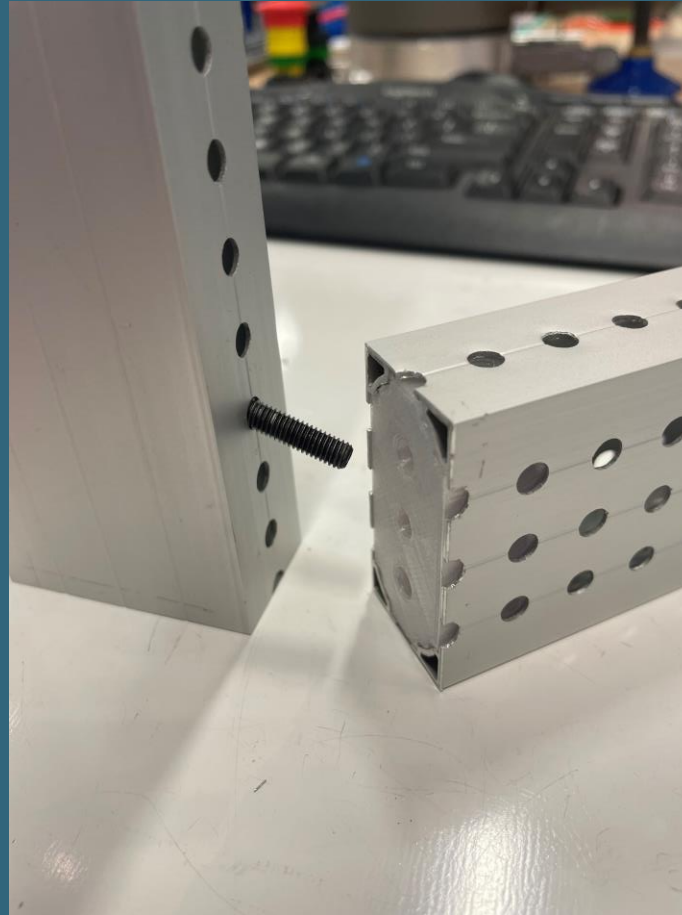
INSERT THE RESPAWN  
BLOCK INTO THE TUBE  
WITH THE HEX NUTS  
FACING THE INSIDE OF  
THE TUBE.



## STEP 3:

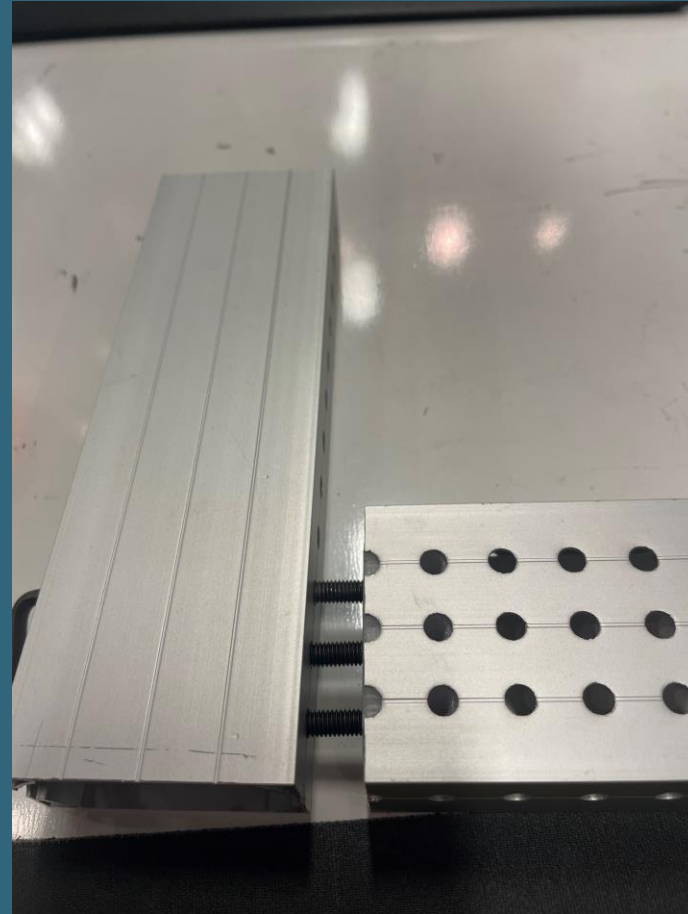
TAKE YOU OTHER TUBE AND  
INSERT ONE SCREW IN ONE  
OF THE SIDE WALLS.

THE RESPAWN BLOCK AND  
SCREWS CAN BE MOVED TO  
REALLY ANY SPOT ON THE  
TUBE IF IT HAS THE 0.2''  
HOLES EITHER ON THE 1''  
SIDE OR THE 2'' AS SHOWN  
ON THE RIGHT 2 PICTURES.



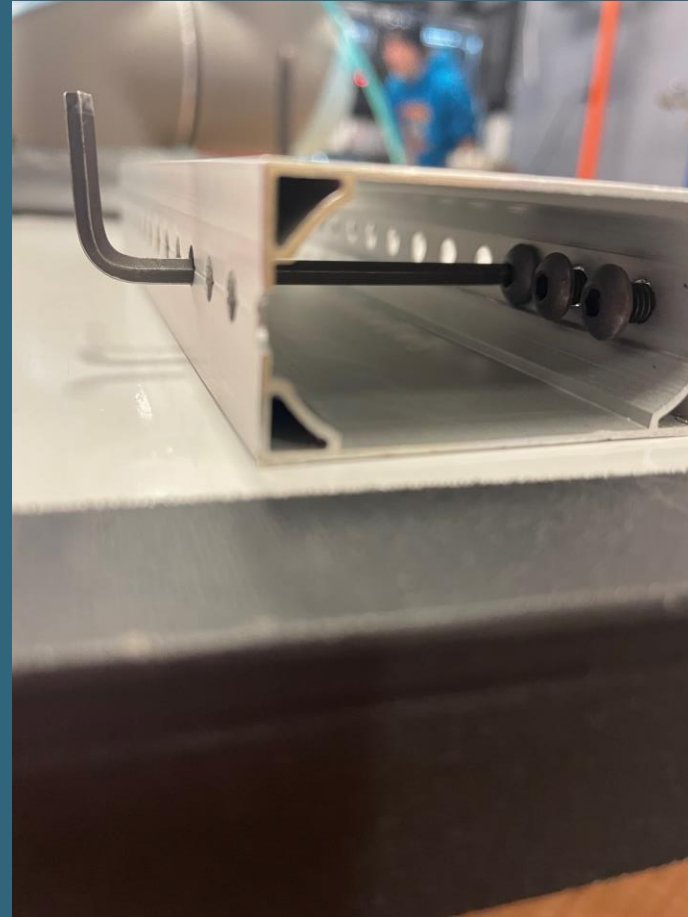
## STEP 4:

NOW PUT IN YOUR OTHER SCREWS AS SHOWN. AGAIN YOU DO NOT HAVE TO USE 3 SCREWS, 2 WILL SUFFICE.



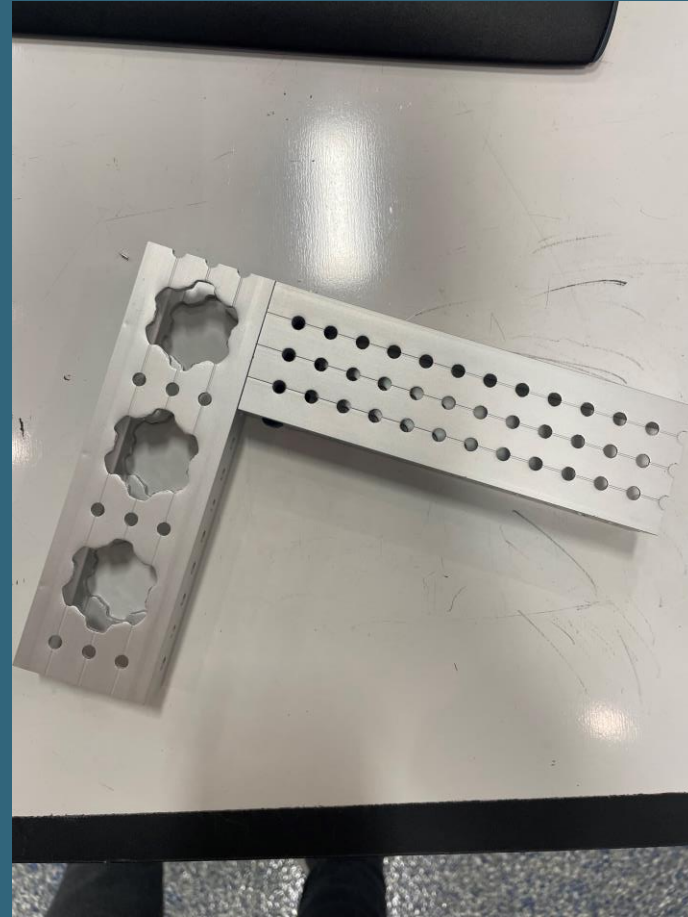
## STEP 5:

NEXT SCREW THEM IN,  
THE EASIEST WAY IS TO  
USE EITHER AN ALAN  
WRENCH OR A T-  
HANDLE AND GO  
THROUGH FROM THE  
OTHER SIDE AS SHOWN.



# STEP 6:

ONCE THE SCREWS  
ARE TIGHTENED, IT  
SHOULD LOOK  
SOMETHING LIKE  
THIS:

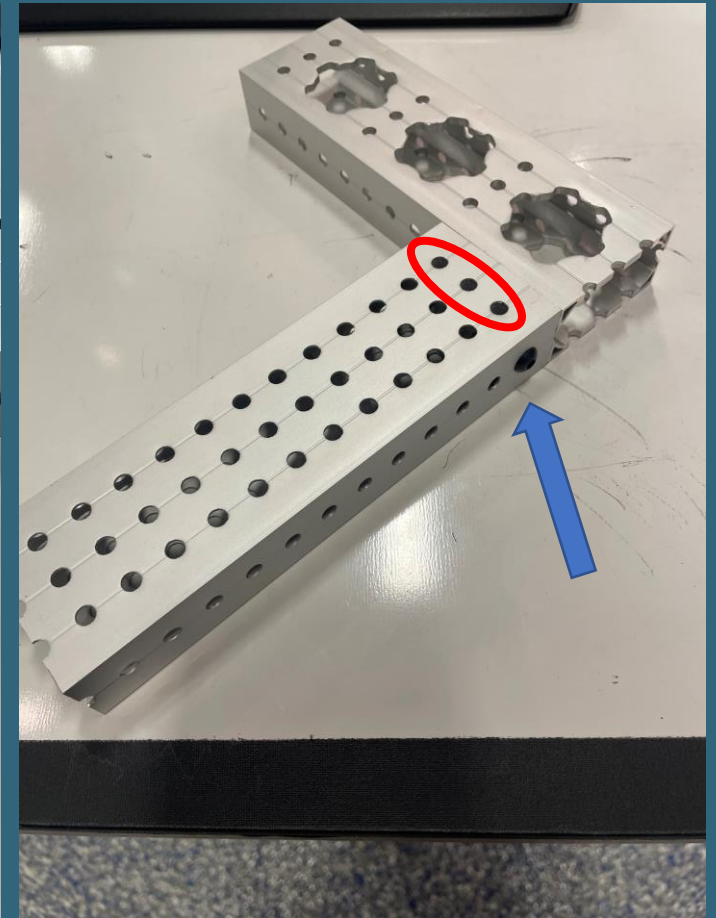
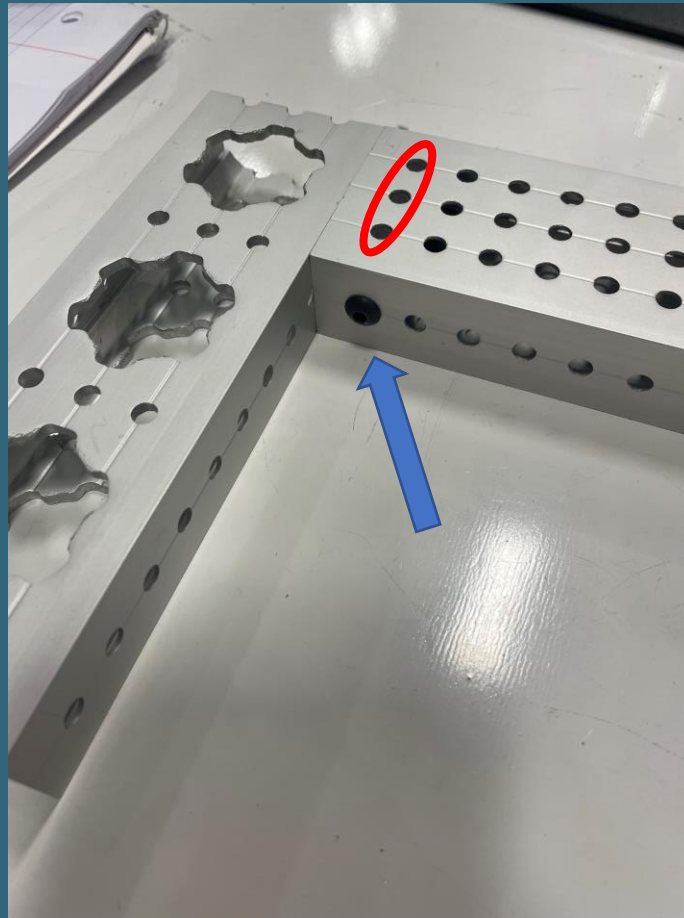




# STEP 7:

NOW YOU NEED TO ADD THE 1/4 " SCREWS. YOU WILL SCREW THOSE IN FROM EACH SIDE AS YOU SEE IN THE PICTURE WITH THE BLUE ARROWS.

THESE WILL GO IN THE SIDE OF THE RESPAWN BLOCK. YOU CAN ALSO PUT THEM ON THE TOP THREE HOLES LABELED IN RED.



# FINAL PRODUCT

ONE OF THE BEST PARTS ABOUT THE RESPAWN BLOCK IS THAT IT IS SO VERSATILE. YOU CAN MOVE IT TO REALLY ANY SPOT ON THE TUBING SO YOU DON'T HAVE TO WORRY ABOUT PLACEMENT.

ALSO IT IS A HIDDEN FASTENER SO YOU CAN HAVE MORE SPACE FOR OTHER APPLICATIONS.

